

BD PosiFlush™ SafeScrub Prefilled Saline Flush Syringe

with an active disinfection unit built
right into the tip



Built-in scrub, built-in protection

Introducing BD PosiFlush™ SafeScrub
Prefilled Saline Flush Syringe—the first
and only all-in-one solution that actively
scrubs *and* flushes



Vascular access devices are an integral part of care for many patients—yet the improper care and maintenance of these devices is one of the leading sources of catheter-related bloodstream infections (CRBSIs).¹

While the guidelines are clear on the importance of scrubbing the hub before every access, inadequate catheter disinfection has been directly linked to CRBSIs.¹



Many high-touch hospital surfaces harbored microbes and increased the risk of infection, contaminating as many as 45% of needlefree connectors¹²



While hub colonization is the strongest predictor of CRBSI, compliance to 'scrub the hub' disinfection guidelines is reported to be as low as 10%¹



Nurses are under tremendous pressure due to record nursing turnover and shortages, with 35.8% of hospitals reporting a nurse vacancy rate of greater than 10%⁴



Due to the influx of new nurses, there is a decline in the experience of the nursing workforce⁴

Patients and healthcare facilities are feeling the burden

53%

CLABSI rates increased as much as 53% year-over-year during the COVID-19 pandemic⁵

25%

CLABSI has an up to 25% mortality rate⁶

\$46k

On average, it costs \$46,000 to treat one CLABSI patient⁷



Efficient, effective IV catheter care

With an active disinfection unit built into the tip of the syringe, the all-in-one BD PosiFlush™ SafeScrub Prefilled Saline Flush Syringe is demonstrated to significantly reduce microbial growth associated with potentially serious CRBSIs.^{8*}

Giving you one more tool to protect your patients and one less thing to worry about.



Demonstrated to reduce microbial growth^{8*}

Built-in active disinfection unit has been proven to reduce on average $\geq 99.99\%$ microbial load of the leading microbes associated with CRBSIs^{8*}



Reinforces compliance to 'scrub the hub' guidelines

Integrated scrubbing device on the tip of the syringe was designed so this important step is not missed



Designed to reduce touch contamination

All-in-one solution is designed to promote aseptic non-touch technique (ANTT[®])



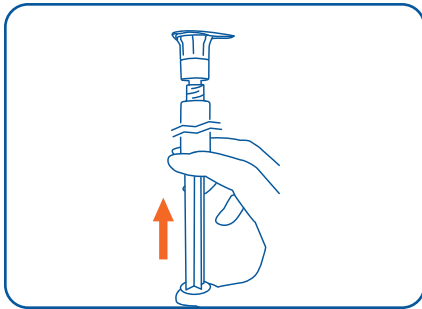
Improves efficiency

Seamless integration of scrubbing into workflow simplifies steps

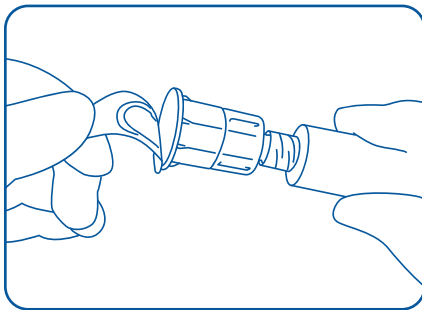
* In vitro test results may not be predictive of clinical performance. Demonstrated reduction of the most common causative agents of CRBSI including Staphylococcus aureus, Staphylococcus epidermidis, Pseudomonas aeruginosa, Escherichia coli, Candida glabrata and Candida albicans.

Points to Practice⁹

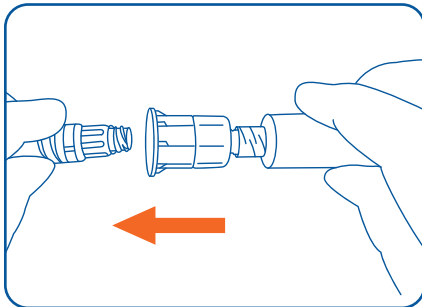
To ensure safe medication preparation and administration, clinicians should practice the “7 rights” of medication administration: right patient, right drug, right dose, right time, right route, right reason, and right documentation.



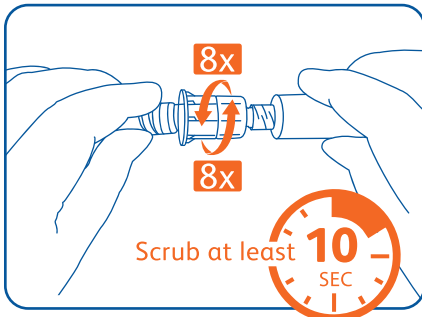
1. Tear open flow wrap packaging at either end and remove device. Inspect device for product integrity. Depress plunger with disinfection unit on to relieve the resistance between the stopper and the barrel.



2. Using aseptic technique, peel off foil cover of the disinfection unit. Do not touch the interior foam pad. Use device immediately after removal of lid.

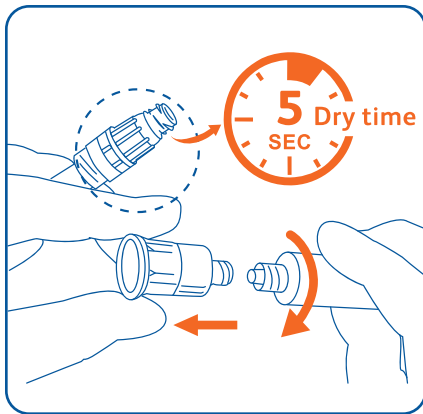


3. **Center the disinfection unit** onto the needleless access device. **Press the disinfection unit/device** until the foam encapsulates the surface of the needleless access device.



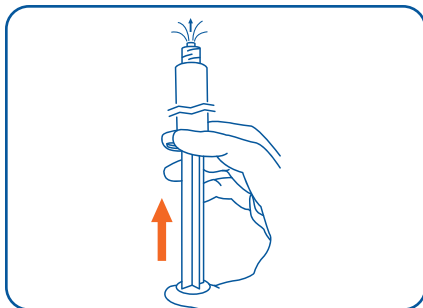
4. **Scrub** by twisting back and forth for at least **10 seconds**. Do this for a minimum of **8 repetitions clockwise** alternating with **8 repetitions counterclockwise**.

This guide is not intended as a replacement for the detailed information contained in the IFU. Please consult BD product labels and package inserts for any indications, contraindications, hazards, warnings, cautions and instructions for use.



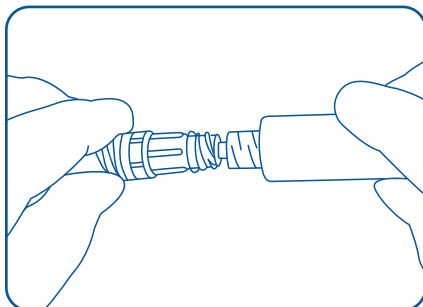
5. Allow the needleless access device to **dry for a minimum of 5 seconds**. Aseptically remove disinfection unit/syringe cap by twisting counterclockwise and discard as per facility protocol, including potentially unused disinfection unit. **DO NOT REUSE** disinfection unit/syringe cap.

WARNING: Do not leave the disinfection unit on the needleless access device after disinfecting.

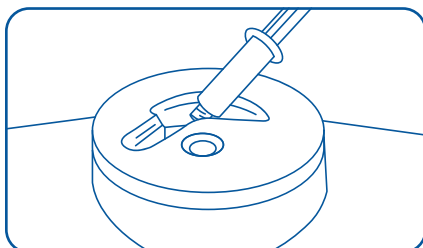


6. Hold the syringe upright and expel the air in the syringe.

Note: If using a blunt plastic cannula (not included with device) for flushing needleless IV system with split septum injection sites, attach blunt plastic cannula to syringe tip.



7. Attach the syringe to the needleless access device then flush system following institution's policy and indwelling device manufacturer's recommendations.



8. Discard used syringe and any unused portion of the solution according to institution policy. **DO NOT REUSE**.

BD PosiFlush™ SafeScrub Prefilled Saline Flush Syringe

SKU Number	Size	Description	Quantity
303191	10ml Prefilled Saline Syringe	0.9% Sodium chloride injection, USP, and 70% isopropyl alcohol	30 / 480

To learn more about the BD PosiFlush™ SafeScrub Prefilled Saline Flush Syringe, contact your local BD sales representative or call 1-844-823-5433.

For technical and clinical information about BD products and the procedures in which they are used, contact the BD Medical Information Services team at 1-800-562-0027 or email us at medical.services@bd.com.

Description: BD PosiFlush™ SafeScrub is a prefilled saline flush syringe with an integrated disinfection unit. It comprises a flush syringe and a disinfection unit that is permanently attached to the distal end of the syringe cap. The prefilled flush syringe contains 0.9% sodium chloride injection, USP and performs as a delivery device at the time of administration. The disinfection unit is a disinfection cleaner that contains 70% isopropyl alcohol (IPA).

Intended Use: The 0.9% sodium chloride injection, USP, BD PosiFlush™ SafeScrub Prefilled Saline Flush Syringe with an integrated disinfection unit is intended to be used as a disinfection cleaner for needleless access devices attached to indwelling vascular access devices (VADs) and flushing of these VADs.

Contraindications: Do not use this device on patients weighing less than 2.1 kg (4.6 lbs).

- This product is not made with natural rubber latex or preservatives.
- Sterile Isopropyl Alcohol solution & sterile Sodium Chloride solution.
- **CAUTION:** Federal (USA) law restricts this device to sale by or on the order of a physician.

- 1 Moureau NL, Flynn J. Disinfection of Needleless Connector Hubs: Clinical Evidence Systematic Review. *Nurs Res Pract.* 2015;2015:796762.
- 2 Kaler, W. Making it easy for nurses to reduce the risk of CLABSI. *Patient Safety, and Quality Healthcare.* 2014;11(6):46-49.
- 3 Strategies to mitigate healthcare personnel staffing shortages. Center for Disease Control and Prevention. Published 2020. Accessed September 29, 2022. <https://www.cdc.gov/coronavirus/2019-ncov/hcp/mitigating-staff-shortages.html>.
- 4 Data Brief: Workforce Issues Remain at the Forefront of Pandemic-related Challenges for Hospitals. American Hospital Association. Published January 2022. Accessed September 29, 2022.
- 5 Weiner-Lastinger LM, Pattabiraman V, Konnor RY, Patel PR, Wong E, Xu SY, Smith B, Edwards JR, Dudeck MA. The impact of coronavirus disease 2019 (COVID-19) on healthcare-associated infections in 2020: A summary of data reported to the National Healthcare Safety Network. *Infect Control Hosp Epidemiol.* 2022 Jan;43(1):12-25. doi: 10.1017/ice.2021.362. Epub 2021 Sep 3. Erratum in: *Infect Control Hosp Epidemiol.* 2022 Jan;43(1):137. PMID: 34473013.
- 6 Chovanec K, Arsene C, Gomez C, Brixey M, Tolles D, Galliers JW, Kopaniasz R, Bobash T, Goodwin L. Association of CLABSI With Hospital Length of Stay, Readmission Rates, and Mortality: A Retrospective Review. *Worldviews Evid Based Nurs.* 2021 Dec;18(6):332-338. doi: 10.1111/wvn.12548. Epub 2021 Nov 14. PMID: 34779128.
- 7 Haddadin Y, Annamaraju P, Regunath H. Central Line Associated Blood Stream Infections. [Updated 2022 May 29].
- 8 BD Inc. Data on file. In vitro test results may not be predictive of clinical performance. Demonstrated reduction of the most common causative agents of CRBSI including *Staphylococcus aureus*, *Staphylococcus epidermidis*, *Pseudomonas aeruginosa*, *Escherichia coli*, *Candida glabrata* and *Candida albicans*.
- 9 BD PosiFlush™ SafeScrub Prefilled Saline Flush Syringe Instructions for Use.

BD, Franklin Lakes, NJ, 07417, U.S.
201.847.6800

bd.com

BD, the BD Logo and BD PosiFlush are trademarks of Becton, Dickinson and Company or its affiliates.
© 2022 BD. All rights reserved. BD-73341 (10/22)

